

# **G1000<sup>™</sup>**

*Trainer User's Guide*

*For G1000 Trainer Version 8.10*



© 2004-2007 Garmin Ltd. or its subsidiaries. All rights reserved.

This User's Guide reflects the operation of the G1000 Trainer Software version 8.10 or later. Some differences in operation may be observed when comparing the information in this manual to earlier or later software versions. The latest revision of the Trainer Software and of this manual may be downloaded from the Garmin website ([www.garmin.com](http://www.garmin.com)).

Garmin International, Inc., 1200 East 151st Street, Olathe, Kansas 66062, U.S.A.  
Tel: 913/397.8200 Fax: 913/397.8282

Garmin AT, Inc., 2345 Turner Road SE, Salem, OR 97302, U.S.A.  
Tel: 503/391.3411 Fax 503/364.2138

Garmin (Europe) Ltd., Unit 5, The Quadrangle, Abbey Park Industrial Estate, Romsey, Hampshire S051 9DL, U.K.  
Tel: 44/0870.8501241 Fax: 44/0870.8501251

Garmin Corporation, No. 68, Jangshu 2nd Road, Shijr, Taipei County, Taiwan  
Tel: 886/02.2642.9199 Fax: 886/02.2642.9099

Website Address: [www.garmin.com](http://www.garmin.com)

Except as expressly provided herein, no part of this manual may be reproduced, copied, transmitted, disseminated, downloaded or stored in any storage medium, for any purpose without the express written permission of Garmin. Garmin hereby grants permission to download a single copy of this manual and of any revision to this manual onto a hard drive or other electronic storage medium to be viewed for personal use, provided that such electronic or printed copy of this manual or revision must contain the complete text of this copyright notice and provided further that any unauthorized commercial distribution of this manual or any revision hereto is strictly prohibited.

Information in this document is subject to change without notice. Garmin reserves the right to change or improve its products and to make changes in the content of this material without obligation to notify any person or organization of such changes or improvements.

Garmin® is a registered trademark of Garmin Ltd. or its subsidiaries. G1000™ and FliteCharts™ are trademarks of Garmin Ltd. or its subsidiaries. These trademarks may not be used without the express permission of Garmin.

Microsoft®, Windows® and DirectX® are registered trademarks of the Microsoft Corporation. Intel® is a registered trademark of the Intel Corporation.

|  |     |
|--|-----|
| <b>Copyright</b> .....                                 | i   |
| <b>Table of Contents</b> .....                         | ii  |
| <b>Software License Agreement</b> .....                | iii |
| <b>Minimum PC System Requirements</b> .....            | 1   |
| <b>Installing the G1000 Trainer</b> .....              | 2   |
| <b>Using the G1000 Trainer</b> .....                   | 3   |
| <b>G1000 Trainer Interface Overview</b> .....          | 3   |
| Menu Bar.....  | 3   |
| G1000 Trainer Bezel.....                               | 4   |
| <i>Knobs, Keys, and Softkeys</i> .....                 | 4   |
| <i>Power Button</i> .....                              | 4   |
| G1000 Control Display.....                             | 4   |
| <i>Right-click Menu</i> .....                          | 4   |
| <i>Airframe Selection</i> .....                        | 5   |
| <i>Display Mode</i> .....                              | 5   |
| <b>Opening and Powering Up the G1000 Trainer</b> ..... | 6   |
| <b>Pausing the G1000 Trainer</b> .....                 | 6   |
| <b>Stopping and Closing the G1000 Trainer</b> .....    | 6   |
| <b>Controlling the G1000 Trainer</b> .....             | 7   |
| External Controls.....                                 | 7   |
| <i>Overview</i> .....                                  | 7   |
| <i>External Joystick Axis Configuration</i> .....      | 7   |
| <i>Keyboard Shortcuts</i> .....                        | 8   |
| G1000 System Controls.....                             | 9   |
| Remote Controls.....                                   | 11  |
| Demo Mode.....   | 12  |
| Simulating Failures.....                               | 14  |
| Simulating Flights.....                                | 15  |
| WFDE Prediction Program.....                           | 15  |
| <b>Sound</b> .....                                     | 16  |
| <b>Help Menu</b> .....                                 | 16  |
| <b>Index</b> .....                                     | 17  |

# SOFTWARE LICENSE AGREEMENT

THIS END-USER LICENSE AGREEMENT ("LICENSE") IS A LEGAL AGREEMENT BETWEEN YOU AND GARMIN CORPORATION ("GARMIN"). ALL GARMIN SOFTWARE AND THIRD PARTY SOFTWARE, WHICH IS (i) INSTALLED IN THE PRODUCT, AND/OR (ii) RECORDED IN MEDIA ATTACHED TO THE PACKAGE OR INCLUDED IN THE PACKAGE OF THE PRODUCT, (EXCEPT AS MAY BE PROVIDED PURSUANT TO OTHER THIRD PARTY END-USER LICENSE AGREEMENTS) SHALL BE REFERRED TO HEREIN AS THE "SOFTWARE". THE SOFTWARE IS OWNED BY, OR LICENSED TO, GARMIN CORPORATION ("GARMIN") AND IS PROTECTED UNDER COPYRIGHT LAWS AND INTERNATIONAL COPYRIGHT TREATIES. THE SOFTWARE IS LICENSED, NOT SOLD. THIS SOFTWARE IS PROVIDED UNDER THE FOLLOWING LICENSE WHICH DEFINES WHAT YOU MAY DO WITH THE PRODUCT AND CONTAINS LIMITATIONS ON WARRANTIES AND/OR REMEDIES.



**NOTE:** Please read this license carefully before using this product. Installing, copying, or otherwise using this product indicates acknowledgment that you have read this license and agree to its terms. If you do not agree, return the complete product to Garmin International, Inc. Customer Service, 1200 East 151st Street, Olathe, KS 66062, U.S.A. within 10 days of the date you acquired it for a full refund.

- 1) LICENSE: GARMIN ("we" or "us") provides you with storage media containing the Software which may also include digital cartographic data and "online" or electronic documentation, and printed materials (together called the "Product") and grants you a limited non-exclusive license to use the Product in accordance with the terms of this License Agreement. The copyright and all other rights to the Product shall remain with us (and our licensors, as applicable). You must reproduce any copyright or other notice marked on the Product on all copies you make.
- 2) YOU MAY:
  - a) install and use one copy of the Product on a single computer or network. This copy is to be used by only a single user at a time. If you wish to use the Product for more users, you will need an additional license for each user.
  - b) make one copy of the Product for archive or backup purposes.
  - c) use a copy of the Product on a home or portable computer if that copy is never loaded at the same time it is loaded on your primary computer.
  - d) transfer the Product to someone else only if you assign all of your rights under this License, cease all use of the Product, erase or destroy any copy (including the hard disk copy) made in support of your use of the Product, and ensure that the other person agrees to the terms of this License.
- 3) YOU MUST NOT:
  - a) make copies of, or provide access to, the Product except as expressly permitted in Section 2 of this License.
  - b) translate, reverse engineer, decompile, or disassemble the Product except to the extent the foregoing restriction is expressly prohibited by applicable law.
  - c) rent, lease, loan, sub-license, distribute, assign, or transfer the Product or any unlock code for the Product except as set out in Section 2 (d) above.
  - d) modify the Product or merge all or any part of the Product with another program.
  - e) use the Product for any unlawful purpose or in any illegal manner.
- 4) TERM: This License shall continue for as long as you use the Product. However, this License will terminate automatically without notice from GARMIN if you fail to comply with any of its terms or conditions. You must agree, upon termination, to destroy all copies of the Product. The Limitations of Warranties and Liability set out below shall continue in force even after any termination.

- 5) **LIMITATION OF WARRANTIES AND LIABILITY:** THE PRODUCT IS PROVIDED ON AN “AS IS” BASIS, WITHOUT ANY WARRANTIES OR CONDITIONS, EXPRESS OR IMPLIED, INCLUDING, BUT NOT LIMITED TO, ANY IMPLIED WARRANTY OF MERCHANTABILITY OR FITNESS FOR A PARTICULAR PURPOSE, OR ANY WARRANTY ARISING BY LAW, STATUTE, USAGE OF TRADE, OR COURSE OF DEALING. YOU ASSUME ALL RESPONSIBILITY AND RISK FOR THE USE OF THIS PRODUCT AND GARMIN DISCLAIMS ALL LIABILITY FOR ANY LOSS, INJURY OR DAMAGE RESULTING FROM USE OF THIS PRODUCT, WHETHER DIRECT OR INDIRECT, AND WHETHER OR NOT GARMIN HAS BEEN ADVISED OF OR HAS KNOWLEDGE OF THE POSSIBILITY OF SUCH LOSS, INJURY OR DAMAGE. IN NO EVENT SHALL GARMIN HAVE ANY LIABILITY TO YOU OR ANY OTHER PERSON OR ENTITY FOR ANY COMPENSATORY, INDIRECT, INCIDENTAL, SPECIAL, CONSEQUENTIAL OR EXEMPLARY DAMAGES WHATSOEVER, INCLUDING, BUT NOT LIMITED TO, LOSS OF REVENUE OR PROFIT, LOST OR DAMAGED DATA OR OTHER COMMERCIAL OR ECONOMIC LOSS, EVEN IF WE HAVE BEEN ADVISED OF THE POSSIBILITY OF SUCH DAMAGES, OR IF THEY ARE FORESEEABLE. WE ARE ALSO NOT RESPONSIBLE FOR CLAIMS BY A THIRD PARTY. OUR MAXIMUM AGGREGATE LIABILITY TO YOU SHALL NOT EXCEED THE AMOUNT PAID BY YOU FOR THE PRODUCT. THE LIMITATIONS IN THIS SECTION SHALL APPLY WHETHER OR NOT THE ALLEGED BREACH OR DEFAULT IS A BREACH OF A FUNDAMENTAL CONDITION OR TERM OR A FUNDAMENTAL BREACH. Some states do not allow the exclusion of incidental or consequential damages or the limitation of duration of an implied warranty so the above limitations may not apply to you. IT IS YOUR RESPONSIBILITY TO USE THIS PRODUCT PRUDENTLY AND TO VISUALLY VERIFY STREETS, ROADS, ROAD SIGNS AND DIRECTIONS. THIS PRODUCT IS INTENDED TO BE USED ONLY AS AN AID AND SHOULD NOT BE USED FOR ANY PURPOSE REQUIRING PRECISE MEASUREMENT OF DIRECTION, DISTANCE OR LOCATION. DO NOT ATTEMPT TO ENTER INFORMATION INTO THE PRODUCT, OR CONTROL THE PRODUCT, WHILE OPERATING A VEHICLE.
- 6) **RESTRICTED RIGHTS:** If this Product is acquired by or for the U.S. Government, then it is provided with Restricted Rights. Use, duplication, or disclosure by the U.S. Government is subject to restrictions as set forth in subparagraph (c)(1)(ii) of The Rights in Technical Data and Computer Software clause at DFARS 252.227-7013, or subparagraphs (c)(1) and (2) of the Commercial Computer Software - Restricted Rights at 48 CFR 52.227-19, or clause 18-52.227-86(d) of the NASA Supplement to the FAR, as applicable. The contractor/manufacturer is Garmin International, Inc., 1200 East 151st Street, Olathe, KS 66062, U.S.A.
- 7) **EXPORT CONTROLS:** You agree not to export or re-export the Product to any country in violation of the export control laws of the United States of America.
- 8) **GARMIN LICENSORS:** With respect to Third Party Software contained in the Product, the provisions of this License shall inure to the benefit of the licensors to Garmin of third party software contained in the Product. Such licensors shall be third party beneficiaries hereof, and shall have the right to enforce any and all rights and claims arising hereunder with respect to such third party software, including the right to bring an action directly against you, in the event of a breach by you of your obligations hereunder.
- 9) **GENERAL:** This License is the entire agreement between us, superseding any other agreement or discussions, oral or written, and may not be changed except by a signed agreement. This License shall be governed by and construed in accordance with the laws of the State of Kansas, United States of America. If any provision of this License is declared by a court of competent jurisdiction to be invalid, illegal, or unenforceable, such a provision shall be severed from the License and the other provisions shall remain in full force and effect.

Thank you for using the Garmin G1000 Trainer. The G1000 Trainer is designed to simulate the behavior of the G1000 system interface and provides the user with a safe environment in which to learn the basic operation of the system. This manual is designed both to guide the user through the G1000 Trainer software application installation and to provide information as to the operation of the G1000 Trainer interface. More detailed information is presented in the Help feature of the G1000 Trainer software.

## MINIMUM PC SYSTEM REQUIREMENTS

### Single Screen Mode:

- 1.8 GHz processor
- 256 MB RAM
- Windows® 2000 or XP
- 400 MB free hard disk space (1.4 GB free hard disk space required with FliteCharts™ option)
- DVD-ROM drive
- Microsoft® DirectX® 9.0c (software application included on the G1000 Trainer DVD-ROM)
- Video Card: DirectX capable card with a minimum of 128 MB of memory and video card drivers that support DirectX 9.0c
- Screen resolution: 1280 pixels wide x 1024 pixels high
- Four-axis joystick with throttle/power and rudder control (optional)
- Sound Card (optional)


### Dual Screen Mode:

- 2.0 GHz processor
- 512 MB RAM
- Windows® 2000 or XP
- 400 MB free hard disk space (1.4 GB free hard disk space required with FliteCharts option)
- DVD-ROM drive
- Microsoft DirectX 9.0c (software application included on the G1000 Trainer DVD-ROM)
- Video Card: DirectX capable card with a minimum of 256 MB of memory and video card drivers that support DirectX 9.0c
- Screen resolution: 1280 pixels wide x 1024 pixels high
- Four-axis joystick with throttle/power and rudder control (optional)
- Sound Card (optional)

# INSTALLING THE G1000 TRAINER

To install the G1000 Trainer software application:

- 1) Insert the G1000 Trainer DVD-ROM into the DVD-ROM drive of the computer (PC) on which the G1000 Trainer software application is to be installed. The screen shown in Figure 1 will automatically appear on your computer.

 **NOTE:** If the G1000 Installer screen does not automatically start, please try the following: Click the 'Start' menu button, select 'Run...'; type in the drive letter (usually D:) of the DVD-ROM drive and click 'OK', then double-click the G1000 Trainer installer file.

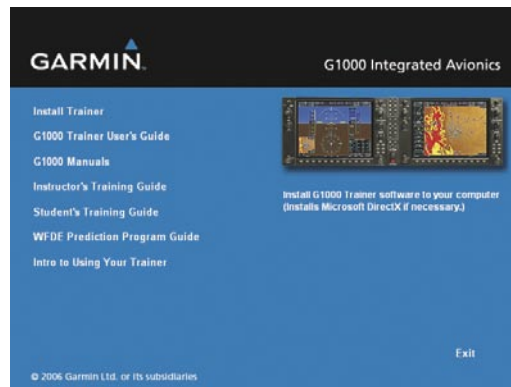


Figure 1 G1000 Installer Screen

- 2) Choose 'Install Trainer' to launch the Trainer Installation.
- 3) Follow the on-screen prompts to install this software application (see Figure 2, left to right).

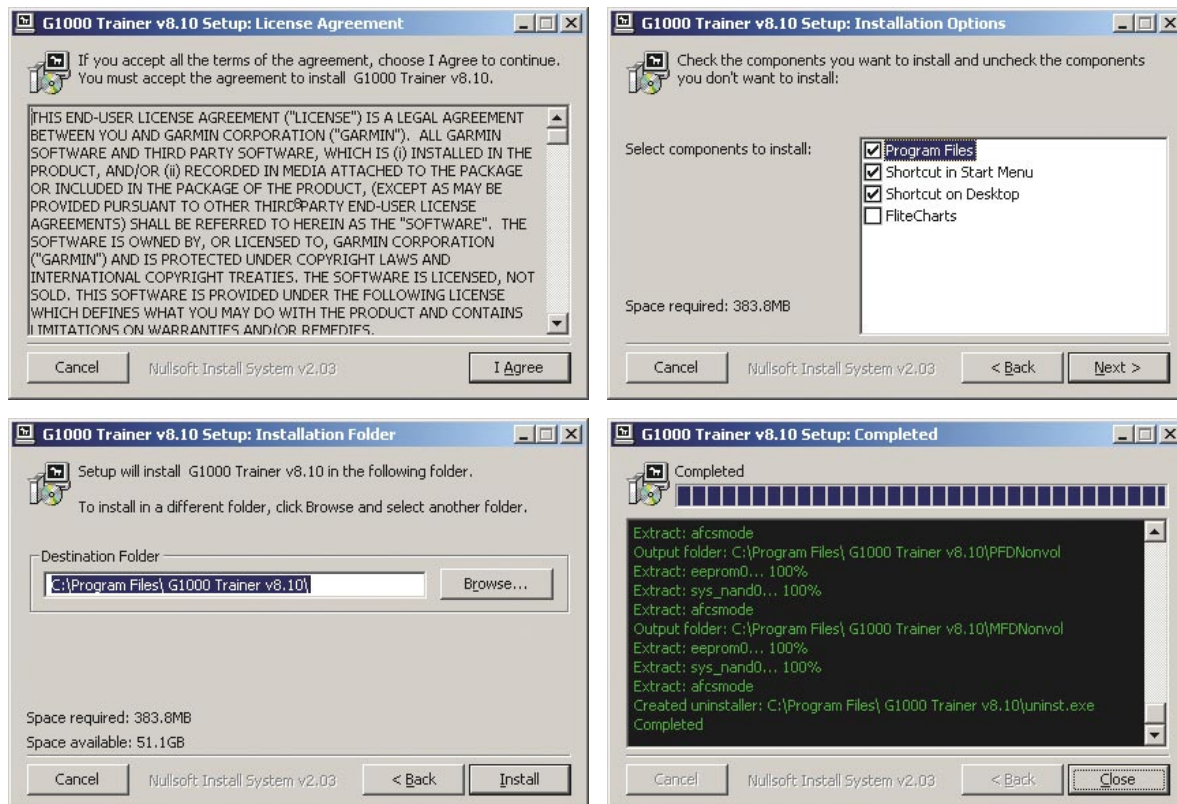


Figure 2 Installation Process (Example)





**NOTE:** The G1000 Trainer software application can only be run if Microsoft DirectX is installed. An installer file for Microsoft DirectX is included on the G1000 Trainer DVD-ROM. Using the G1000 Trainer

## USING THE G1000 TRAINER



**NOTE:** The G1000 Pilot's Guide documentation provides detailed information relative to the operation of the G1000 Integrated Cockpit System. Before using the G1000 Trainer and in order to use it most effectively, please review the G1000 Pilot's Guide documentation thoroughly.

## G1000 TRAINER INTERFACE OVERVIEW

The G1000 Trainer interface is composed of a menu bar, the G1000 GDU bezel, and the G1000 Control Display (Figure 3).

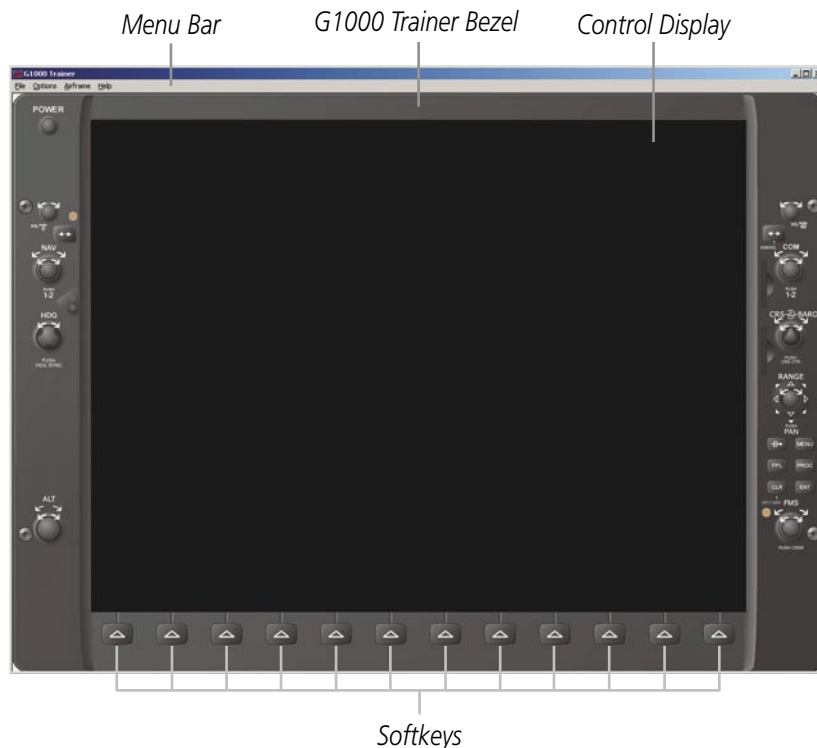


Figure 3 G1000 Trainer Interface

### MENU BAR

The menu bar is located across the top of the G1000 Trainer interface window and consists of the following menus (corresponding menu options are listed in parentheses):

- File (Power-up; Exit)
- Options (Screen Capture; Reversionary Mode; PFD Mode; MFD Mode; Simulate Failures; Pause; Joystick Axis Configuration; WFDE Prediction Program, Enable Sound)
- Airframe (displays a list of available airframes)
- Help (G1000 Trainer Help; About)

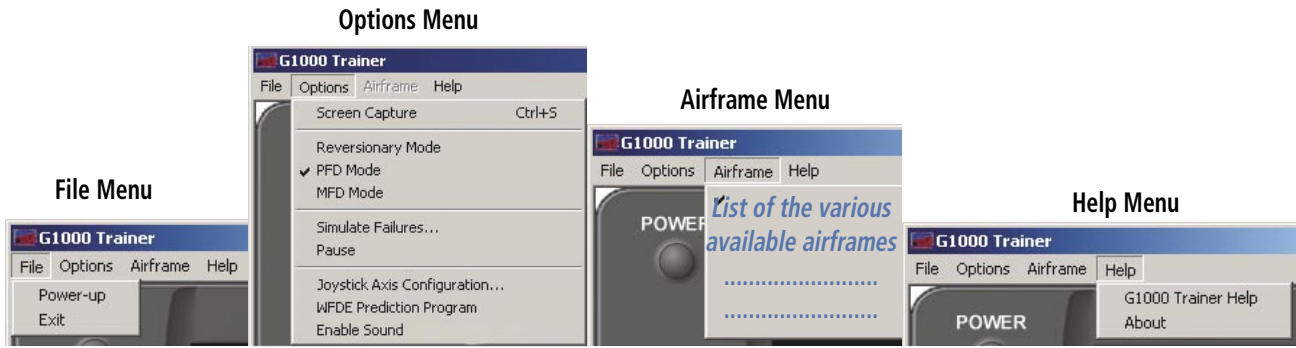


Figure 4 G1000 Trainer Menus and Menu Options

## G1000 TRAINER BEZEL

### KNOBS, KEYS, AND SOFTKEYS

The G1000 Trainer bezel surrounds the control display and consists of the same knobs, keys, and softkeys as those found on the G1000 system. The softkeys are located across the bottom of the display and are designed to perform various functions depending upon the control display mode and the specific page being displayed.

### POWER BUTTON

Although the G1000 System does not feature a power button, such a button has been added to the top left corner of the G1000 Trainer bezel for practical purposes.



**NOTE:** Pressing the power button while the G1000 system is running stops the system.

## G1000 CONTROL DISPLAY

### RIGHT-CLICK MENU

The right-click menu can be displayed at any time by right-clicking anywhere on the G1000 Trainer bezel or Control Display. As illustrated below, this menu includes the following options: **Reversionary Mode**, **PFD Mode**, **MFD Mode**, **Simulate Failures**, **Pause**.

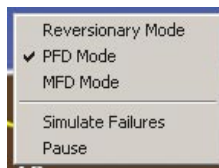


Figure 5 Right-click Menu



**NOTE:** In Dual Screen Mode, the PFD and MFD Mode options are not available on the Right-click Menu.

## AIRFRAME SELECTION

The G1000 Trainer is designed to simulate specific airframes.

### To select an airframe:

- 1) Ensure that the G1000 Trainer is powered off.
- 2) Click the 'Airframe' menu and select the desired airframe.



**NOTE:** At initial G1000 Trainer power-up, the airframe listed first in the 'Airframe' menu is selected by default.

---



**NOTE:** When changing airframes in dual screen mode, be sure to make the change in both the PFD and MFD windows.

---

## DISPLAY MODE

The G1000 control display can be configured at any time as either a Primary Flight Display (PFD) or a Multi Function Display (MFD). The G1000 control display can also be set at any time to Reversionary mode (or backup mode), a mode in which all important flight information from both the PFD and the MFD is presented.

### To configure the G1000 Trainer as a PFD or an MFD:

Click the 'Options' menu and select the 'PFD Mode' or 'MFD Mode' menu option, respectively.

### To set the G1000 Trainer to Reversionary mode:

Click the 'Options' menu and select 'Reversionary Mode'.



**NOTE:** Deselecting 'Reversionary Mode' returns the display to the normal display mode that was selected before Reversionary mode was activated (i.e., either PFD or MFD).

---

## OPENING AND POWERING UP THE G1000 TRAINER

---

### To open the G1000 Trainer:

1a) Double-click the G1000 Trainer shortcut located on the PC desktop (the 'Shortcut on Desktop' option is selected by default at installation).

Or:

1b) Click the G1000 Trainer shortcut located in the PC Start menu under 'Programs' (the 'Shortcut in Start Menu' option is selected by default at installation).


### To power up the G1000 Trainer:

1a) Click the power button located at the top left corner of the G1000 Trainer bezel.

Or:

1b) Click the 'File' menu and select 'Power-up'.

---

 **NOTE:** Only when the G1000 system is powered up in MFD mode is the Power-up Page displayed. The Power-up Page provides checklist information as well as land, terrain, and aviation database information. To exit the Power-up Page and display the Map Page, click on the **ENT** key or the right-most softkey.

---

### To start the G1000 Trainer in Dual Screen mode:

Click the PC 'Start' Menu, select 'All Programs', select 'G1000 Trainer v8.10', and click on the 'Start Dual Screen Trainer' option.

### To start the remote controls for the G1000 Trainer:

Click the PC 'Start' Menu, select 'All Programs', select 'G1000 Trainer v8.10', and click on the 'Start Remotes' option. The remote controls can only be used in dual screen mode.

## PAUSING THE G1000 TRAINER


---

Pausing the Trainer pauses the airspeed, altitude, vertical speed, and position of the aircraft.

### To pause the G1000 Trainer:

Click the 'Options' menu and select 'Pause'.

---

 **NOTE:** To resume the G1000 Trainer session, deselect the 'Pause' option in the 'Options' menu.

---

## STOPPING AND CLOSING THE G1000 TRAINER

---

### To stop the G1000 Trainer:

Click the power button.

### To stop and close the G1000 Trainer:

1a) Click the 'File' menu and select the 'Exit' menu option.

Or:

1b) Click the 'x' icon located at the top right corner of the G1000 Trainer window.

## CONTROLLING THE G1000 TRAINER

---

### EXTERNAL CONTROLS

#### OVERVIEW

The G1000 Trainer is operated via the following external controls:

- External joystick, as indicated in the minimum PC system requirements.
- PC mouse
- Keyboard

The external joystick is used to emulate pilot control inputs during flight, while the PC mouse is used to control the G1000 Trainer knobs, keys, and softkeys. Keyboard shortcuts are also available to perform certain PC mouse actions (see Keyboard Shortcuts).

#### EXTERNAL JOYSTICK AXIS CONFIGURATION

If the external joystick is not configured adequately to simulate pilot control inputs on the G1000 Trainer, it can be configured by the user before system power-up.



**NOTE:** Joystick axis configuration can only be performed *BEFORE* the G1000 system is powered up. If the joystick settings are changed while the G1000 system is powered up, the trainer must be restarted for the changes to take effect.

---



**CAUTION:** The external joystick axes should be configured according to the standard pilot control inputs.

---

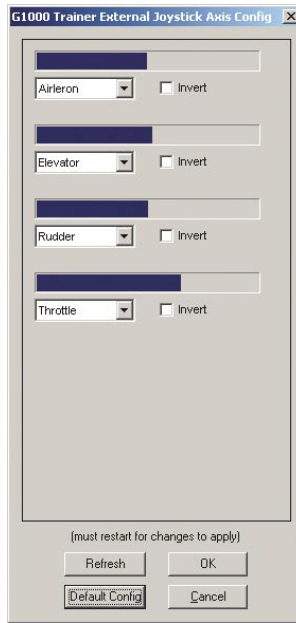
**To configure the joystick for the various pilot control inputs on the G1000 Trainer:**

- 1) Click the 'Options' menu and select 'Joystick Axis Configuration'.
- 2) Configure the external joystick axes as appropriate.
- 3) Click the 'OK' button.



**NOTE:** The original external joystick axis configuration can be restored by clicking the 'Default Config' button, then by clicking the 'OK' button on the Joystick Axis Configuration window.

---



**Figure 6 G1000 Trainer Joystick Axis Configuration**

## KEYBOARD SHORTCUTS

A number of G1000 controls can also be activated on the G1000 Trainer using keyboard shortcuts. The following shortcuts are available:

- ‘W’ activates the power button.
- ‘F1’ to ‘F12’ respectively activate softkeys 1 through 12 (where softkey numbers are defined by the position of the softkey from left to right on the bezel).
- ‘N’ (same as ‘F11’) displays and hides the NRST window – PFD only.
- ‘Y’ (same as ‘F12’) displays and hides the ALERTS window – PFD only.
- ‘D’ activates the Direct-to key
- ‘M’ activates the MENU key.
- ‘F’ activates the FPL key.
- ‘P’ activates the PROC key.
- ‘ESC’ activates the CLR key.
- ‘Enter’ (carriage return) activates the ENT key.
- The space bar presses the FMS knob.
- The arrow keys rotate the FMS knob as follows:
  - Down arrow turns the large FMS knob clockwise (upper right arrow on the display).
  - Up arrow turns the large FMS knob counterclockwise (upper left arrow on the display).
  - Right arrow turns the small FMS knob clockwise (lower right arrow on the display).
  - Left arrow turns the small FMS knob counterclockwise (lower left arrow on the display).
- The number keys on the number keypad activate the bezel joystick used to pan the map.



---

**NOTE:** *The number keypad shortcuts are not available on laptop computers.*

---

- ‘Alt’ + ‘F’ pulls down the ‘File’ menu.
- ‘Alt’ + ‘O’ pulls down the ‘Options’ menu.
- ‘Alt’ + ‘A’ pulls down the ‘Airframe’ menu.
- ‘Alt’ + ‘H’ pulls down the ‘Help’ menu.

## G1000 SYSTEM CONTROLS

With the exception of the power button (button which is not present on the actual G1000 GDU), the controls of the G1000 Trainer work in the same manner as those found on the actual G1000 display bezel. For example, placing the mouse pointer over the Direct-to key and clicking it with the left mouse button is equivalent to pressing the key of interest.

In addition, arrows are displayed around the knobs of the G1000 Trainer in order to enable simulation of knob rotation. For instance, clicking the top right arrow located above the FMS knob corresponds to turning the large FMS knob clockwise.



---

**NOTE:** *Please refer to the corresponding Pilot’s Guide documentation for further details on the knobs, keys, and softkeys.*

---

# G1000 TRAINER OPERATION

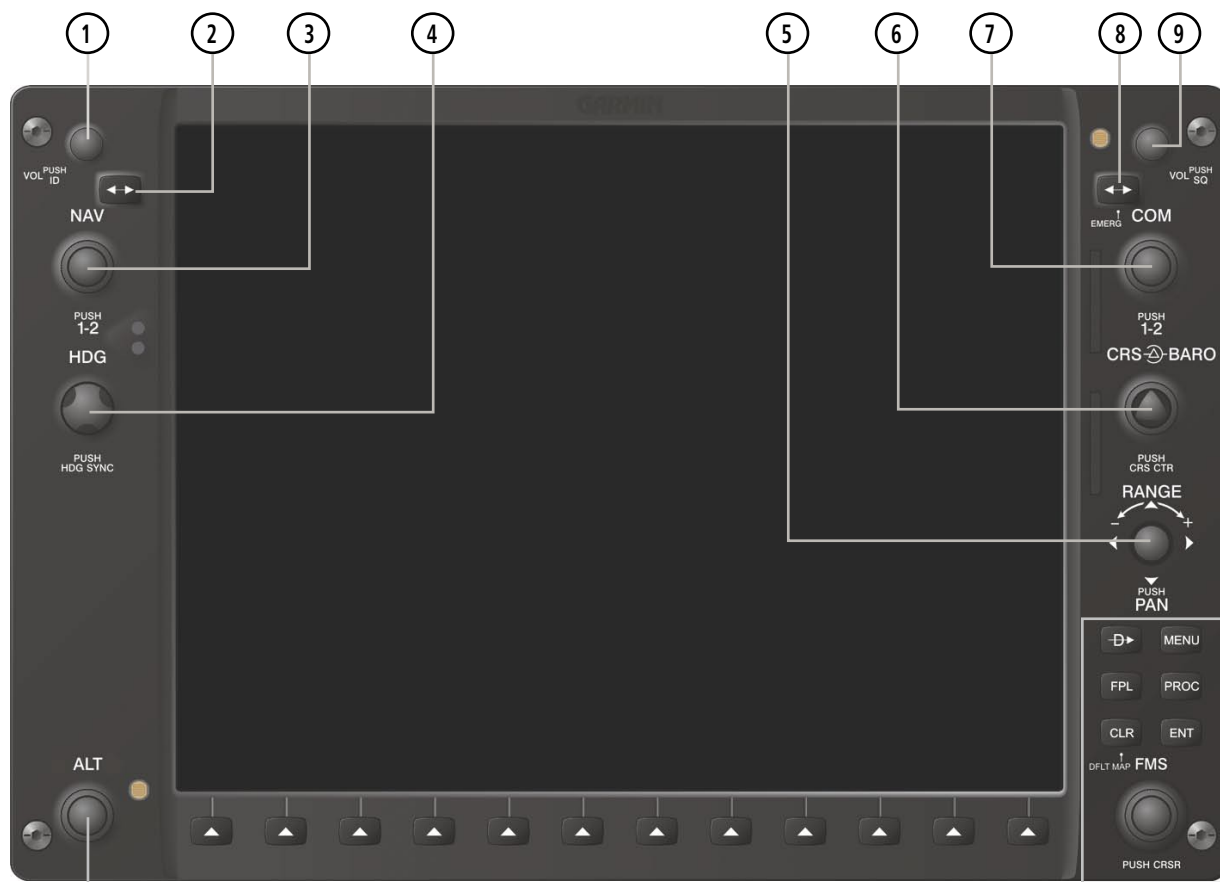
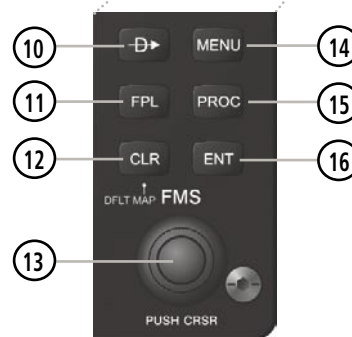


Figure 7 G1000 PFD/MFD Controls (Actual Display Shown)

- ① NAV VOL/ID Knob
- ② NAV Frequency Toggle Key
- ③ NAV Knob
- ④ Heading Knob
- ⑤ Range Joystick
- ⑥ Course/Baro Knob
- ⑦ COM Knob
- ⑧ COM Frequency Toggle Key
- ⑨ COM VOL/SQ Knob
- ⑩ Direct-to Key
- ⑪ Flight Plan Key
- ⑫ Clear Key
- ⑬ Flight Management System Knob
- ⑭ Menu Key
- ⑮ Procedure Key
- ⑯ Enter Key
- ⑰ Altitude Knob





## REMOTE CONTROLS

The operation of the remote controls is similar to the operation of the G1000 System Controls described on the previous page. Not all versions of the G1000 Trainer provide the Remote Controls. Dual Screen Mode and the Remote Controls are accessed via the Windows 'Start' button, see the preceding section Opening and Powering Up the G1000 Trainer, for instructions.



**NOTE:** The Garmin Control Unit and the AFCS Controls may vary in appearance from the following examples, and are only operational in Dual Screen Mode.

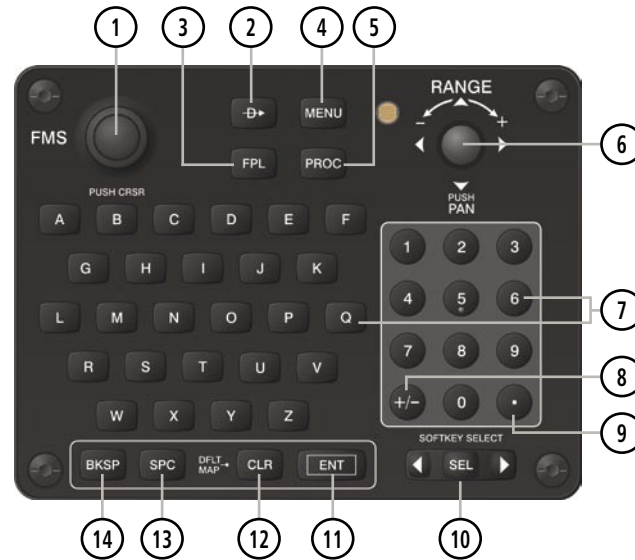


Figure 8 Garmin Control Unit

- |                 |                          |            |
|-----------------|--------------------------|------------|
| ① Dual FMS Knob | ⑥ Joystick               | ⑪ ENT Key  |
| ② Direct-to Key | ⑦ Alphanumeric Keys      | ⑫ CLR Key  |
| ③ FPL Key       | ⑧ Plus (+) Minus (-) Key | ⑬ SPC Key  |
| ④ MENU Key      | ⑨ Decimal Key            | ⑭ BKSP Key |
| ⑤ PROC Key      | ⑩ SEL Key                |            |



**NOTE:** The AFCS Controls work only with the PFD.

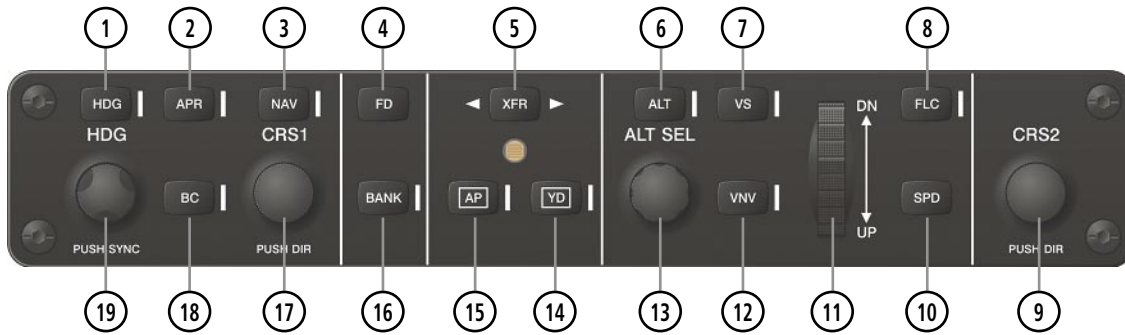


Figure 9 AFCS Controls

- |           |             |                    |             |
|-----------|-------------|--------------------|-------------|
| ① HDG Key | ⑥ ALT Key   | ⑪ NOSE UP/DN Wheel | ⑯ BANK Key  |
| ② APR Key | ⑦ VS Key    | ⑫ VNV Key          | ⑰ CRS1 Knob |
| ③ NAV Key | ⑧ FLC Key   | ⑬ ALT SEL Knob     | ⑱ BC Key    |
| ④ FD Key  | ⑨ CRS2 Knob | ⑭ YD Key           | ⑲ HDG Knob  |
| ⑤ XFR Key | ⑩ SPD Key   | ⑮ AP Key           |             |

## DEMO MODE

If no external joystick is connected to the PC, the G1000 Trainer operates in Demo mode. In Demo mode (Figure 10), control inputs cannot be simulated in real time. However, a number of flight parameters can be configured in the Demo Mode window in order to allow flight simulation.

The DEMO MODE options are divided into the following sections on the MFD:

- POS/VEL - Settings related to speed, altitude, and position
- GPS - Settings related to GPS solution and receiver type
- SIMULATE FAILURE - Allows user to intentionally fail various parts of the system (See Simulating Failures section).
- OTHER - Other miscellaneous trainer settings

# G1000 TRAINER OPERATION

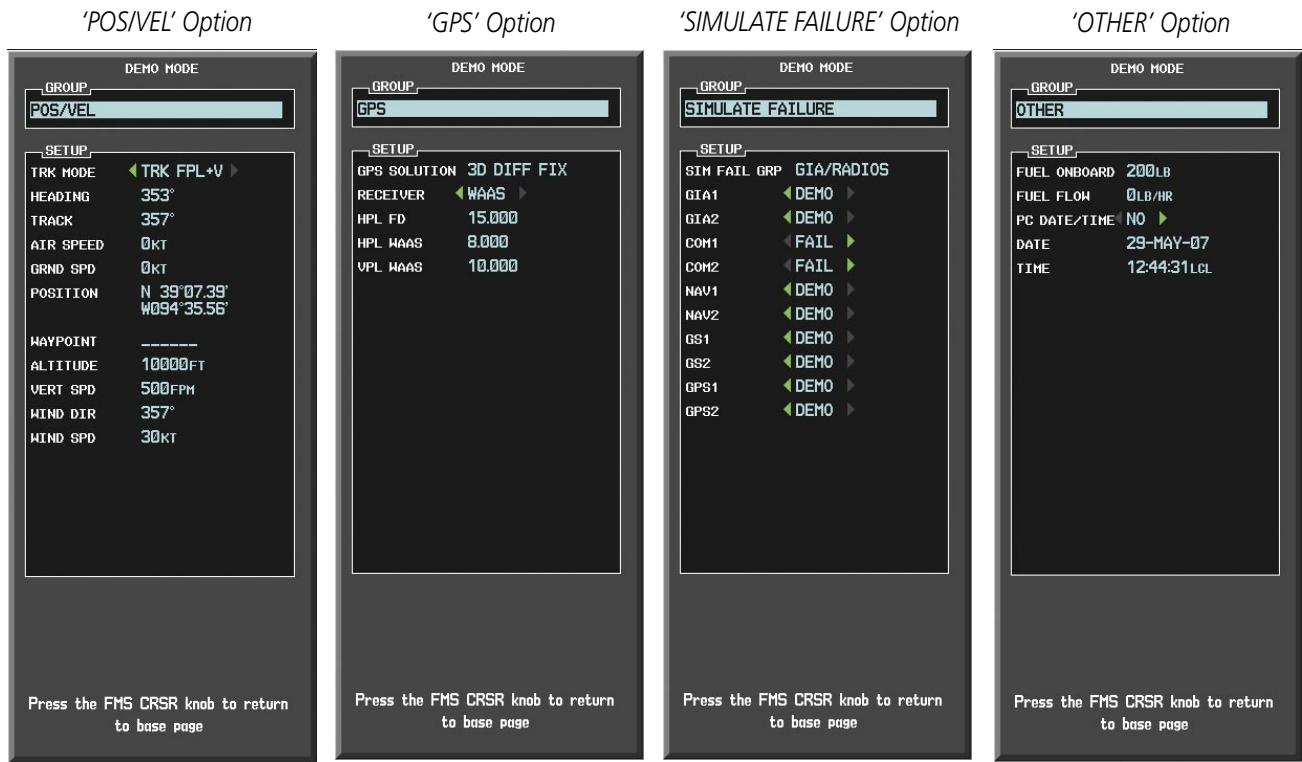


Figure 10 MFD Demo Mode Windows

A condensed version of the DEMO MODE options is available on the PFD as follows:

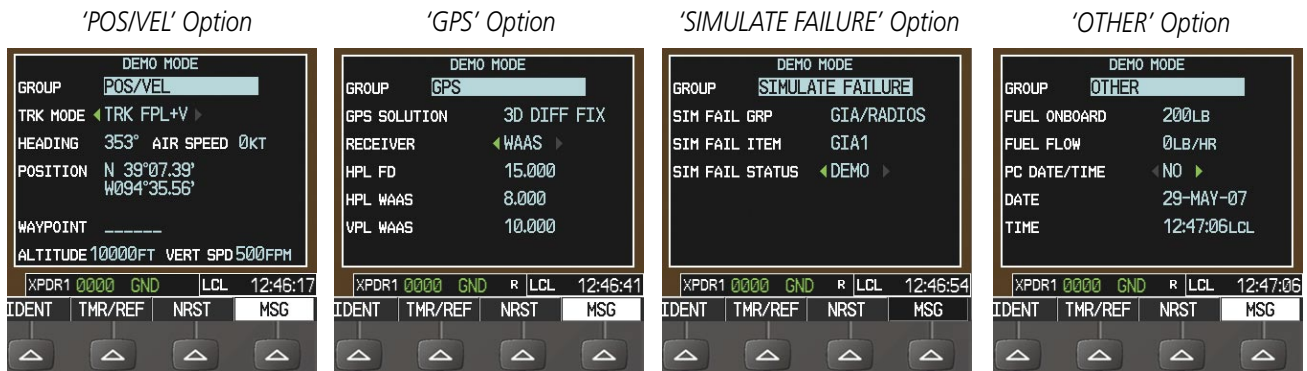


Figure 11 PFD Demo Mode Windows

Following are brief descriptions of some of the available flight parameters:

- TRK MODE – Track mode may be set to ‘MANUAL’, ‘TRK FPL’, or ‘TRK FPL+V’. In TRK FPL (track flight plan) and TRK FPL+V mode (Vertical Navigation or VNAV) HEADING is set automatically.
- HEADING – Heading can only be changed when TRK MODE is set to ‘MANUAL’.
- VERT SPD – Vertical speed
- WIND DIR – Wind direction
- WIND SPD – Wind speed
- GPS SOLUTION – Recommend setting to ‘3D DIFF FIX’, other options may cause unexpected results.

- RECEIVER – Receiver may be set to ‘GPS’ or ‘WAAS’; Selecting WAAS allows aircraft to use WAAS enabled approaches.
- HPL FD – Horizontal Protection Level (in meters) - Positional Accuracy using WAAS with Fault Detection
- HPL WAAS – Horizontal Protection Level (in meters) - Positional Accuracy using WAAS
- VPL WAAS – Vertical Protection Level (in meters) - Positional Accuracy using WAAS
- PC DATE/TIME - Choose to use the computer’s date and time, or specify the date and time yourself

### To display the Demo Mode window:

Click the **MENU** Key twice.

### To toggle between the PFD Demo Mode windows:

- 1) With the PFD Demo Mode window displayed, use the **FMS** Knob to highlight the ‘OPTIONS’ field.
- 2) Use the **FMS** Knob to select the ‘POS/VEL’, ‘GPS’, ‘SIMULATE FAILURE’, or ‘OTHER’ option.

### To set the flight parameters in the Demo Mode window:

- 1) Use the **FMS** Knob and the **ENT** key to change the flight parameters as desired.
- 2) Press the **FMS** Knob to close the Demo Mode window.

## SIMULATING FAILURES

Failures of various parts of the G1000 system may be simulated at any time while the G1000 system is running by turning off the associated Line Replaceable Units (LRUs).

The tree-like layout of the Simulate Failures window demonstrates how some components depend on others to function properly. For example, if both GIA1 and GIA2 are disabled, none of the components below them, such as COM1 or GPS2, will work.

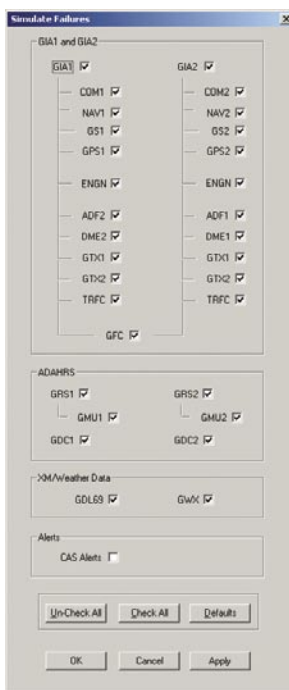


Figure 12 Simulate Failures Window

**To display various G1000 system failures:**

- 1) If in single screen mode, ensure that the trainer is set to Reversionary mode to allow the full range of failures to be displayed.
- 2) Click the 'Options' menu and select 'Simulate Failures ...'.
- 3) Deselect the LRU(s) for which a failure is to be simulated and click 'OK'.

**SIMULATING FLIGHTS**

Both the practice exercises presented in the G1000 Pilot's Training Guide and the procedures included in the G1000 Multi Function Display Pilot's Guide can help to provide the user with flight scenarios and may thus be followed to simulate flights in G1000-equipped aircraft.

**WFDE PREDICTION PROGRAM**

Prior to departure, the operator must use the WFDE Prediction Program supplied with the G1000 Trainer to demonstrate that there are no outages in the capability to navigate on the specified route of flight. The WFDE Prediction Program determines whether the GPS constellation is robust enough to provide a navigation solution with sufficient integrity for the specified route of flight. The trainer software and the document 'WFDE Prediction Program Instructions' (190-00643-01) are included on the G1000 Trainer DVD-ROM and are also available through Garmin's website ([www.garmin.com](http://www.garmin.com)).

A RAIM or FDE prediction must be performed prior to departure for the following types of flight plans:

- An FDE prediction is required for Oceanic/Remote operation where GPS is to be the primary source of navigation per FAA AC 20-138A Appendix I.
- A RAIM prediction is required for all other flight operations in accordance with local aviation authority guidelines for TSO-C129a equipment, as required by an Aircraft Flight Manual limitation placed on Garmin G1000 with GIA 63W, GNS 480, and GNS 400W/500W Series products. Examples of such operations include navigation of U.S. Area Navigation (RNAV) routes, Standard Instrument Departures (SIDs), or Standard Terminal Arrival Routes (STARs) per FAA AC 90-100 "U.S. Terminal and En Route Area Navigation (RNAV) Operations".
- A WAAS satellite visibility prediction is required for all LVAV/VNAV or LPV approach as required by an Aircraft Flight Manual limitation placed on Garmin G1000 with GIA 63W, GNS 480, and GNS 400W/500W Series products.

To use the WFDE Prediction Program, begin by entering the intended flight plan into the G1000 Trainer software. The WFDE Prediction Program uses this information to analyze satellite coverage along your intended route of flight.




---

**NOTE:** *The following procedures describe just one of several methods available to create and activate a flight plan using the G1000 Trainer. See the G1000 Pilot's Guide and Reference for the applicable aircraft for further information.*

---

**To create a flight plan prior to using the WFDE Prediction Program:**

- 1) With the G1000 Trainer running, the simulated G1000 unit on, and the MFD selected; click on the **FPL** Key.
- 2) Click on the small **FMS** Knob and select the Flight Plan Catalog Window.
- 3) Click on the **MENU** Key.
- 4) Highlight 'Create New Flight Plan'.

- 5) Click on the **ENT** Key. The Stored Flight Plan Page is displayed. A blank flight plan page is displayed for the first empty storage location. Enter the identifier, facility, or city name of the departure waypoint and click on the **ENT** Key.
- 6) Enter the identifier for each additional flight plan waypoint.
- 7) Once all waypoints have been entered, click on the **FMS** Knob to store the flight plan and return to the Flight Plan Catalog Window.

Prior to running the WFDE Prediction Program, the flight plan created in the preceding steps needs to be activated. The WFDE Prediction Program only works with the currently active flight plan.

#### To activate a stored flight plan:

- 1) With the G1000 Trainer running, the simulated G1000 unit on, and the MFD selected; click on the unit's **FPL** Key to display the flight plan pages.
- 2) Click on the small **FMS** Knob to select the Flight Plan Catalog Window.
- 3) Click on the small **FMS** Knob to activate the cursor.
- 3) Click on the large **FMS** Knob to highlight the desired flight plan.
- 4) Click on the **MENU** Key.
- 5) Click on the large **FMS** Knob to highlight 'Activate Flight Plan?'
- 6) Click on the **ENT** Key twice to activate the flight plan.

The WFDE Prediction Program may now be started by clicking on the Trainer's 'Options' Menu and selecting 'WFDE Prediction Program'.

## SOUND

---

The G1000 Trainer has the ability to play audio alerts. A sound card must be installed to hear the alerts.

#### To enable or disable audio alerts:

Choose 'Options' and check or uncheck 'Enable Sound'.

## HELP MENU

---

The G1000 Trainer Help menu can be accessed at any time. It contains the following two options:

- G1000 Trainer Help – provides information on how to use the controls in the G1000 Trainer.
- About – provides copyright and software application version information (Figure 13).

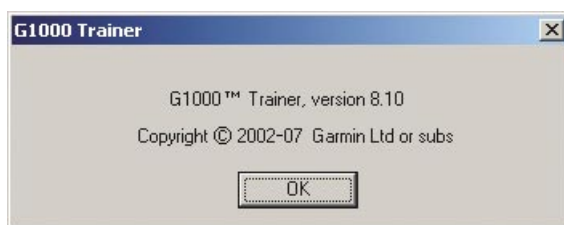


Figure 13 Copyright and Software Version Information

## A

|               |        |
|---------------|--------|
| About         | 3, 16  |
| AFCS Controls | 11, 12 |
| Airframe      | 5      |
| Audio Alerts  | 16     |

## B

|       |   |
|-------|---|
| Bezel | 3 |
|-------|---|

## C

|                        |    |
|------------------------|----|
| Closing (application)  | 6  |
| Configuring            |    |
| Control display mode   | 4  |
| External joystick axes | 7  |
| Controls               |    |
| External               | 7  |
| G1000 system           | 9  |
| Control display        | 3  |
| Mode                   | 4  |
| Control inputs         | 12 |
| Copyright              | i  |

## D

|                               |                 |
|-------------------------------|-----------------|
| Demo Mode                     | 12, 13          |
| GPS                           | 12, 13, 14, 15  |
| OTHER                         | iii, iv, 12, 13 |
| POS/VEL                       | 12, 13, 14      |
| SIMULATE FAILURE              | 12, 13, 14      |
| Documentation (Pilot's Guide) | 3, 9            |
| Dual Screen Mode              | 1, 4, 6, 11     |
| DVD-ROM                       | 1               |

## E

|              |   |
|--------------|---|
| Enable Sound | 3 |
|--------------|---|

## F

|                                     |    |
|-------------------------------------|----|
| FDE (fault detection and exclusion) | 15 |
| FDE prediction                      | 15 |
| File menu                           | 4  |
| Flight parameter(s)                 | 12 |
| GPS SOLUTION                        | 13 |
| HEADING                             | 13 |
| MANUAL                              | 13 |
| TRK FPL                             | 13 |
| VERT SPD                            | 13 |
| WIND DIR                            | 13 |
| WIND SPD                            | 13 |

|                  |      |
|------------------|------|
| Flight plan      | 15   |
| Flight scenarios | 15   |
| FMS Knob         | 8, 9 |

## G

|                     |    |
|---------------------|----|
| Garmin Control Unit | 11 |
|---------------------|----|

## H

|       |       |
|-------|-------|
| Help  | 3     |
| About | 3     |
| Menu  | 4, 16 |

## I

|                         |   |
|-------------------------|---|
| Installation (software) | 2 |
| Interface               | 3 |

## J

|                              |       |
|------------------------------|-------|
| Joystick (bezel)             | 8, 10 |
| Joystick (external)          | 1     |
| Axis configuration           | 3, 7  |
| Axis configuration (default) | 7     |

## K

|                      |       |
|----------------------|-------|
| Key(s)               | 4, 11 |
| CLR                  | 8, 10 |
| COM Frequency Toggle | 10    |
| Direct-to            | 8, 10 |
| ENT                  | 8, 10 |
| FPL                  | 8, 10 |
| MENU                 | 8, 10 |
| NAV Frequency Toggle | 10    |
| PROC                 | 8, 10 |
| Keyboard             | 7     |
| Shortcuts            | 8     |
| Knob(s)              | 4     |
| ALT                  | 10    |
| COM                  | 10    |
| COM VOL/SQ           | 10    |
| CRS/BARO             | 10    |
| FMS                  | 8, 10 |
| HDG                  | 10    |
| NAV                  | 10    |
| NAV VOL/ID           | 10    |
| Rotation             | 9     |

|                                      |         |                                     |              |
|--------------------------------------|---------|-------------------------------------|--------------|
| <b>M</b>                             |         | <b>R</b>                            |              |
| Memory -----                         | 1       | RAM -----                           | 1            |
| Menu                                 |         | Registered trademark(s) -----       | i            |
| File -----                           | 4       | Remote controls -----               | 6, 11        |
| Help -----                           | 4, 16   | Resuming (Trainer session) -----    | 6            |
| Options -----                        | 4       | Reversionary mode -----             | 3, 4, 5, 15  |
| Menu bar -----                       | 3       | Right-click -----                   | 4            |
| Menu options -----                   | 3       |                                     |              |
| MFD mode -----                       | 3, 4, 5 | <b>S</b>                            |              |
| Minimum PC system requirements ----- | 1       | Shortcut(s)                         |              |
| Mode -----                           | 5       | Keyboard -----                      | 8            |
| Demo -----                           | 12      | Simulate Failures -----             | 3, 4, 14, 15 |
| Dual Screen -----                    | 1, 6    | Simulating (flight) -----           | 15           |
| MFD -----                            | 5       | Softkey(s) -----                    | 3, 4, 8      |
| PFD -----                            | 5       | Software license agreement -----    | iii          |
| Reversionary -----                   | 5       | Sound -----                         | 1, 3, 16     |
| Mouse (PC) -----                     | 7       | Starting (application) -----        | 11           |
|                                      |         | Stopping (Trainer session) -----    | 6            |
| <b>O</b>                             |         | System requirements (minimum) ----- | 1            |
| Opening (application) -----          | 6       |                                     |              |
| Options menu -----                   | 4       | <b>T</b>                            |              |
|                                      |         | Table of contents -----             | ii           |
| <b>P</b>                             |         | Trademark(s) -----                  | i            |
| Pausing (Trainer session) -----      | 4, 6    | TRK MODE -----                      | 13           |
| PC DATE/TIME -----                   | 14      |                                     |              |
| PFD mode -----                       | 3, 4, 5 | <b>V</b>                            |              |
| Power-up Page -----                  | 6       | Version (software) -----            | 16           |
| Powering up (Trainer) -----          | 6       | Video card -----                    | 1            |
| Power button -----                   | 4, 6    |                                     |              |
| Processor -----                      | 1       |                                     |              |







Garmin International, Inc.  
1200 East 151st Street  
Olathe, KS 66062, U.S.A.  
p: 913.397.8200 f: 913.397.8282

Garmin AT, Inc.  
2345 Turner Road SE  
Salem, OR 97302, U.S.A.  
p: 503.391.3411 f: 503.364.2138

Garmin (Europe) Ltd.  
Liberty House, Bulls Copse Road  
Hounslow Business Park  
Southampton  
SO40 9RB U.K.  
p: 44/0870.8501241 f: 44/0870.8501251

Garmin Corporation  
No. 68, Jangshu 2nd Road  
Shijr, Taipei County, Taiwan  
p: 886/2.2642.9199 f: 886/2.2642.9099

[www.garmin.com](http://www.garmin.com)