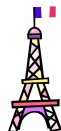




VIKING'S Guide to St Cyr (LFPZ)



Wishing to visit Paris?

- The aerodrome of St Cyr l'Ecole (LFPZ) is about the only one readily accessible from Paris by public transports. You have the choice between the "RER C" and the suburban train to "Montparnasse" train station. Each option offers about one train every 15 minutes on weekdays and Saturdays, and one train every 30 minutes on Sundays.
- LFPZ is a nice aerodrome with two large parallel grass runways, a restaurant and a lot of aero-clubs. You even have a very nice view on the Versailles castle during crosswind RWY 12 / base leg RWY 30.
- The only trouble is to *find* the place and to *get* there... without rushing into a Class A zone or otherwise getting yourself into any kind of trouble. That's why this guide may be useful...

How do I get there ?

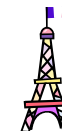
- LFPZ is located WSW of Paris, in the 1500 ft AMSL "ringroad" that is the closest area you can get to Paris under VFR.



This is your destination

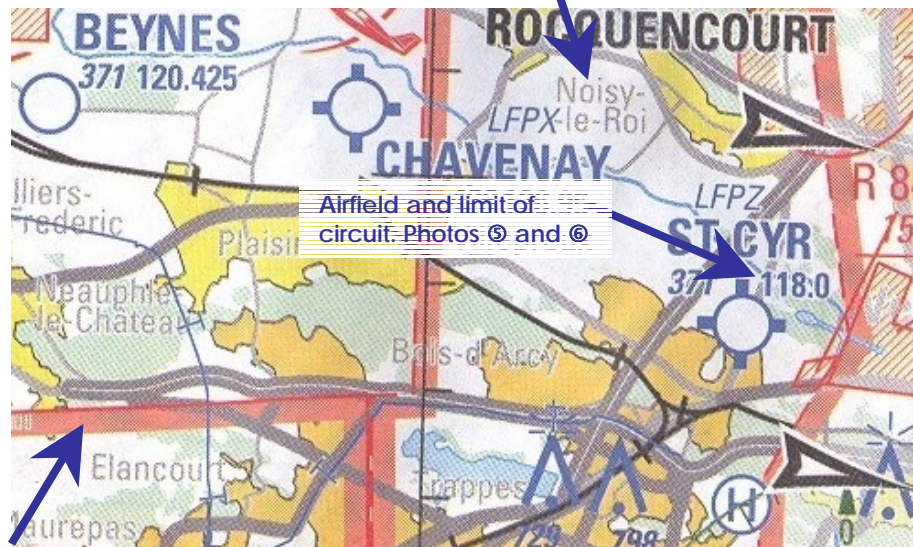


VIKING'S Guide to St Cyr (LFPZ)



- There are two reporting points (inbound and outbound). Just to make things easier, these are NOT indicated on the VAC chart for LFPZ.
- There are also a lot of areas to avoid (villages, farms...)
- Maximum altitude of 1500 ft AMSL and very close Class A area makes it impossible to fly over and all around the area in a big circle to study the area.
- The following detailed map and photos might help you. The arrows indicate the angle from where the pictures are taken.

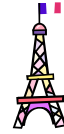
"Secteur Nord"
Photos ① and ②



"Secteur Ouest"
Photos ③ and ④



VIKING'S Guide to St Cyr (LFPZ)



VIKING'S Guide to St Cyr (LFPZ)



*Arrival from the north / north-west
Reporting point "Secteur Nord"*

Photo ①

**30 seconds from
reporting point
« Secteur Nord »**

Max. altitude 1500 ft AMSL

Approximate coordinates:
48° 52' 50" N
002° 00' 00" E

Radio: 118.0 (St Cyr TWR)



Photo ②

**Reporting point
« Secteur Nord »**

Characteristics: greenhouses¹

Max. altitude 1500 ft AMSL

Approximate coordinates:
48° 51' 30" N
002° 01' 30" E

Radio: 118.0 (St Cyr TWR)



*Arrival from the south / south-west
Reporting point "Secteur Ouest"*

Photo ③

**Reporting point
« Secteur Ouest »**

Characteristics: traffic tunnel

Max. altitudes:
Inbound = 1500 ft AMSL
Outbound = 2000 ft AMSL

Approximate coordinates:
48° 47' 50" N
001° 54' 00" E

Radio: 118.0 (St Cyr TWR)



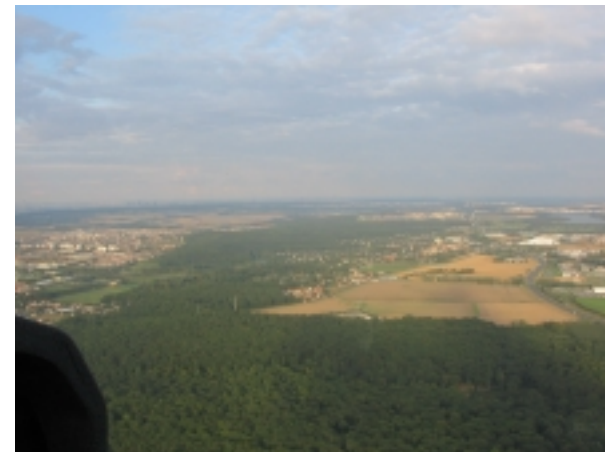
Photo ④

**Overhead the narrow
forest strip just after
reporting point
« Secteur Ouest »**

Max. altitudes:
Inbound = 1500 ft AMSL
Outbound = 2000 ft AMSL

Radio: 118.0 (St Cyr TWR)

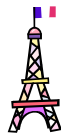
Note: You might feel that the forest is no broader than your wing span, but that's correct! Just continue, but watch carefully out for outbound traffic!



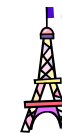
¹ Note that there is another set of greenhouses on the right hand side at only one minute from "ours". You might see these wrong greenhouses on your right hand side just before you see the correct greenhouses.



VIKING'S Guide to St Cyr (LFPZ)



VIKING'S Guide to St Cyr (LFPZ)



Other useful photos



Photo ©

The airfield seen from "Secteur Nord"

You can see the A12 motorway which is perpendicular to the runways.



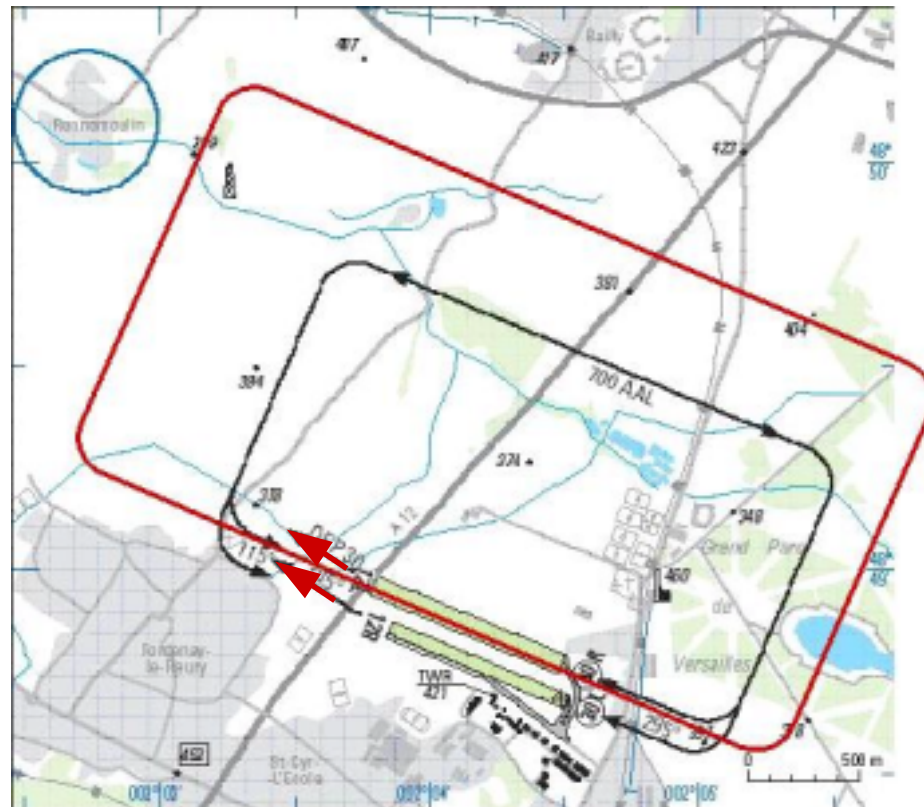
Photo ©

Limit of landing circuit

Base leg 30 / crosswind 12 is perpendicular to the Versailles Château channel. See also "Correct landing circuit" on the next page for more details.

Correct landing circuit

The landing circuit indicated on the VAC chart is slightly incorrect. The red one on this chart is the one that is used.





VIKING'S Guide to St Cyr (LFPZ)



Last but not least...

Just some general information about the Paris area that you should be aware of.

The below map is an extract of the official 1:250.000 scale map of the areas around Paris, issued by the SIA (Service de l'Information Aéronautique). We strongly recommend your using this map near Paris, since the 1:500.000 scale maps are virtually illegible in this area. Note also that there are two areas (one north and the other south of Paris) where maximum heights and permitted circuits vary depending upon whether nearby zones are active or not. Only the 1:250.000 map shows this clearly.

Most of the inner ring of Paris is well indicated and "protected" by VOR radials. Using them makes the navigating easier for you.



Don't fly over "yellow" and "orange" towns unless the maximum height permits you to. (No use searching: around Paris is never does!)

Everything on the right side (or "inside") of this red line is Paris TMA, a Class A. Don't go there unless you wish to loose your pilot license very quickly...



VIKING'S Guide to St Cyr (LFPZ)



Some useful links

If you need any more information about flying in France, here are some useful links:

<http://www.sia.aviation-civile.gouv.fr>

SIA = Service de l'Information Aéronautique.

To find VAC charts, click on :

- AIP
- Publication d'information aéronautique (AIP)
- France Métropolitaine
- AIP France – France Métropolitaine
- Cartes d'Approche et d'Atterrissage à vue (VAC)
- ... and then the name of the airfield

<http://www.lachainemeteo.com>

For a free of charge weather forecast (5 days)

<http://olivia.aviation-civile.gouv.fr>

NOTAM, flight plans etc.

And, of course :

<http://www.ac-courbevoie.com/>

[Aéroclub de Courbevoie](#)