



NTPL/POL

SANTA'S WORKSHOP INTL (12-25)

25 DEC
24 Dec 0001Z

NORTH POLE VILLAGE RNAV (GPS) Rwy 18

ARCTIC Center

NORTH POLE Approach

WORKSHOP Traffic

122.8

122.8 when ELFCOM inop.

122.8 when ELFCOM inop.

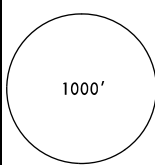
RLS
(Reindeer
Landing System)

Final
Apt Crs
360°T

Minimum Alt
CLAUS
2500' (2450')

RLS
DA(H)
(CONDITIONAL)
250' (200')

Apt Elev 50'
Rwy 18 50'



MSA WSP NDB

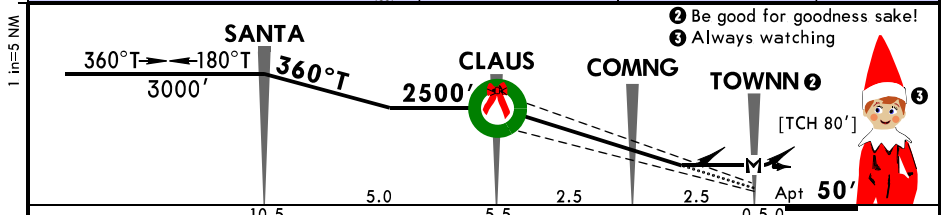
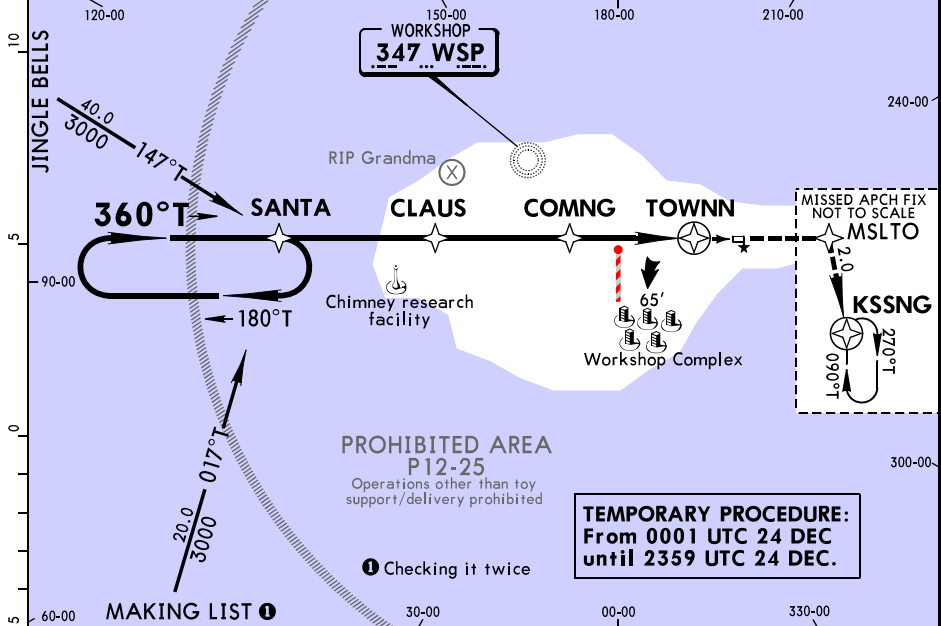
MISSED APCH: Climb to 2500' direct MSLTO, then RIGHT turn direct KSSNG and hold.

Alt Set: INCHES Trans level: FL 180 Trans alt: 18000'

CAUTION: Departures may be illuminated by blinding red nose light.

CAUTION: Supersonic heavy departures; non-sleigh traffic discouraged.

1. Reindeer practice flights year-round. 2. Flights in the vicinity may be conducted under the influence of Egg Nog. 3. No unapproved winter operations. 4. Postal flights with letters to Santa receive priority sequencing. 5. Reindeer and Elves on and in vicinity of runway. 6. Runway does not maintain stationary location.



Speed (Reindeer operating)	4	5	6	7	8	9	
Glide Path Angle	[7.0°]	N/A	N/A	800	998	1140	1430
MAP at TOWNN							

1 If Dasher sick, reduce speed by 2 reindeer

SALS 2500'

TINSEL TWINKLE

MSLTO

MERRY OPS	STRAIGHT-IN LANDING RWY 18						LOC		CIRCLE-TO-LAND		
	RLS		LOC (Rudolph Out)				2 or more reindeer inop		2 Authorized only when Rudolph available		
	FULL	TINSEL out	TINSEL/TWINKLE out	TINSEL out	TINSEL/TWINKLE out	TINSEL out	TINSEL/TWINKLE out	TINSEL out	TINSEL/TWINKLE out	Rdr in Svc	MDA(H)
6										6	450' (400') -1
7										7	550' (500') -1
8	RVR 0	RVR 40 or 3/4	RVR 50 or 1	RVR 40 or 3/4	RVR 50 or 1	RVR 60 or 1 1/4	1	1 1/4	2	8	650' (600') -1 1/2
9										9	750' (700') -2

CHANGES: Noel procedure.

© JEPPESEN, 2013. ALL RIGHTS RESERVED.



NTPL/POL
 Apt Elev **50'**
 N 90.0 W 0.0

JEPPESEN
 25 DEC
 24 Dec 0001Z (12-25)

NORTH POLE VILLAGE
 SANTA'S WORKSHOP INTL

WORKSHOP Traffic

NORTH POLE Approach

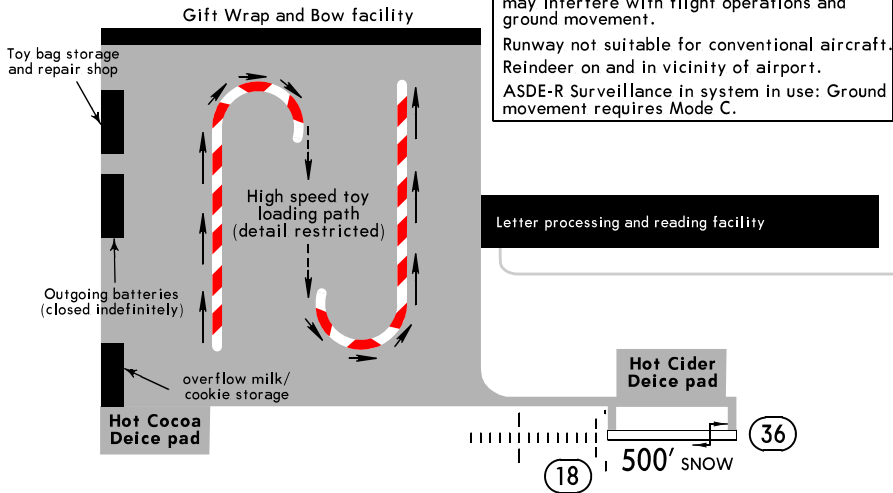
ARCTIC Center

122.8 when ELFCOM inop.

122.8 when ELFCOM inop.

122.8

CAUTION: Reindeer games during toy loading may interfere with flight operations and ground movement.
 Runway not suitable for conventional aircraft. Reindeer on and in vicinity of airport.
 ASDE-R Surveillance in system in use: Ground movement requires Mode C.



ADDITIONAL RUNWAY INFORMATION

RWY	USABLE LENGTHS	LANDING BEYOND		TAKE-OFF	WIDTH
		Threshold	Glide Slope		
09 ① 27	RL ② TINSEL ② TWINKLE SALS Reindeer vis Range (RVR)				100' 33m

- ① Only hoof brakes permitted on runway.
- ② Illuminated Dec 1 - Dec 31 annually.

TAKE-OFF			FOR FILING AS ALTERNATE	
Rwy 18			RNAV (GPS) Rwy 18	Other
Adequate Red Nose Illum.	Under-the-weather Nose Illum.			
6 - 7 Rdr	RVR 0	RVR 12	800-2	NA
8 - 9 Rdr		RVR 7		

Letter and Wish List to Santa Claus

This year I have been:

Naughty Nice

Dear Santa Claus,

Thank you,

Christmas List

For Workshop use only:

Received on: _____

Orders sent to elves: _____

Naughty/nice checked by: _____

Naughty/Nice List Last Minute Changes

It's never too late!

NICE	Code	NAUGHTY	Code

Nice behavior change codes:

- 01 - Cleaning up room on own
- 02 - Helping parents
- 03 - Walking old lady across street
- 04 - Giving something to someone in need
- 05 - Cooperating with parents

- 06 - Cooperating with brothers/sisters
- 07 - Helping with pets
- 08 - Helping in kitchen/with meals
- 09 - Being nice
- 10 - Other

Naughty behavior change codes:

- 11 - Not listening to parents
- 12 - Peeking at/snooping for gifts
- 13 - Mean to brother/sister
- 14 - Not following rules
- 15 - Misbehavior in school
- 16 - Taking things that don't belong to him/her

- 17 - Getting into or stealing others belongings
- 18 - Vandalism/throwing rocks
- 19 - Being a hellion
- 20 - Talking to strangers
- 21 - Telling lies
- 22 - Other